



Become a Leading Intelligent Entrance Solutions Provider of the World



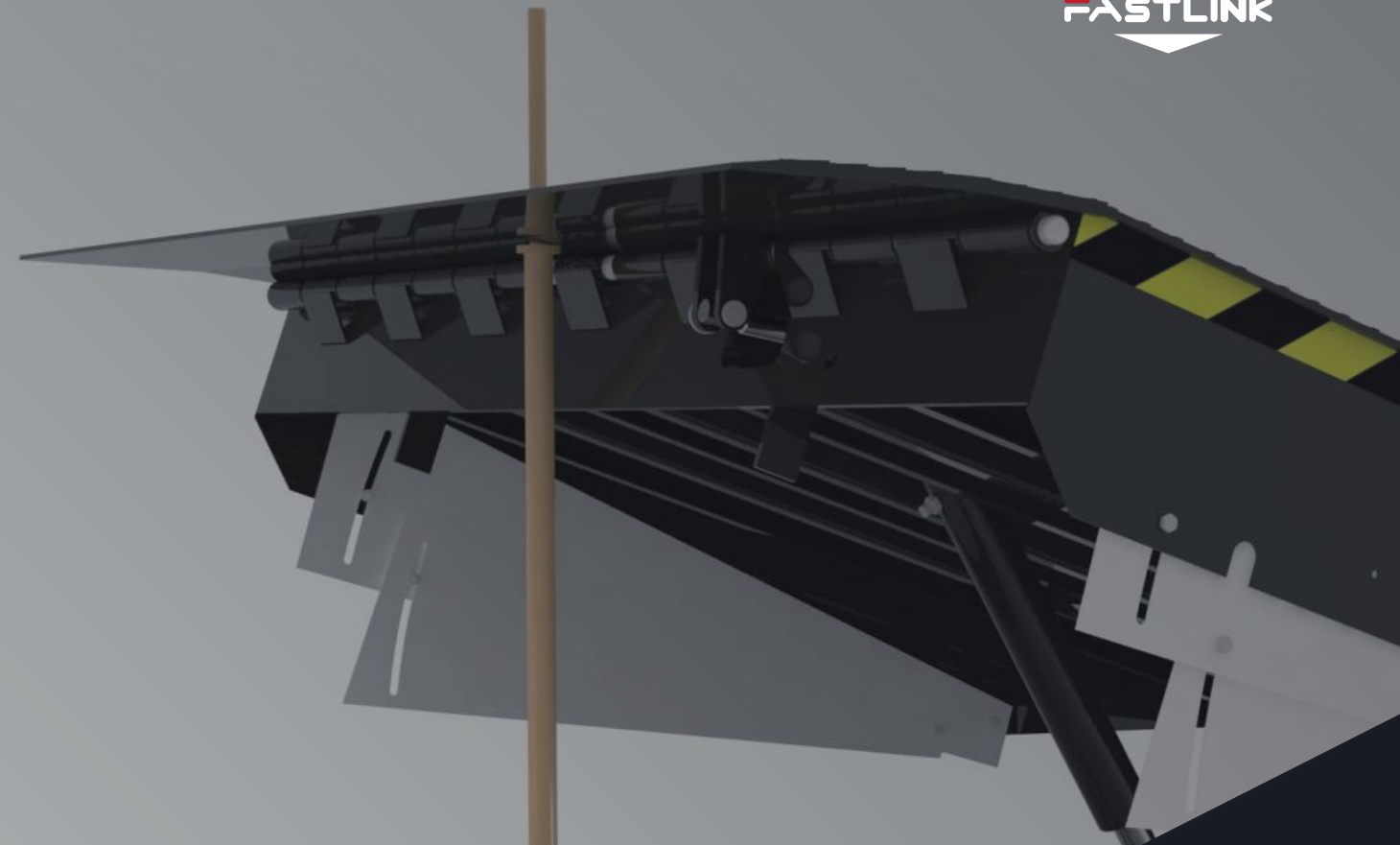
Shanghai Fastlink Door Co.,Ltd.

Tel: +86 021 64601300

After-sales Hotline: +86 400 880 6460

Email: sales@fastlinkchina.com

Official Website: www.fastlinkus.net



BECOME A LEADING INTELLIGENT ENTRANCE SOLUTIONS PROVIDER OF THE WORLD

DOCK LEVELER

WWW.FASTLINKUS.NET



ABOUT FASTLINK

Shanghai Fastlink Door Co., Limited, a national high-tech enterprise titled "Shanghai Famous Brand" , is an access intelligence solution provider and manufacturer of industrial doors and handling equipment. We independently develop and manufacture products including insulated sectional doors, single panel sectional doors, PVC high speed doors, cold storage high speed doors, dock levelers, dock shelters and have a number of technology patents and European CE certification.

Since its establishment in 2004, Fastlink has already become a strong brand in the industry and won trust and recognition of customers in many industries and fields with excellent product quality and perfect service support. It maintains good partnership with well-known enterprises such as GLP, Vanke, ESR, Goodman, Mapletree, Yuepei, Ping An Properties, Sinotrans, Shenzhen International, JD.com, Cainiao, Hema, Meituan, GFS , Mercedes-Benz, BMW, Geely, Bayer, BASF, Intco Medical, CATL, Huayou Cobalt.

In 2010, Fastlink built a modern factory of 30,000 square meters in Jiading, Shanghai, and introduced German technology and production lines, which laid a solid foundation for the company to become a leading industrial equipment manufacturer in China.

At present, Fastlink has established a sales network and after-sales service system in more than 20 cities nationwide. Meanwhile, we have fully introduced ERP and CRM systems, and realized the "information system + cloud platform " by the technology of the Internet of Things, so as to comprehensively improve order fulfillment and service quality.

With the international management mechanism, the design and development teams with "innovation as the first competitiveness" , and the service network integrating marketing, installation and after-sales service, Fastlink is steadily growing into a leading intelligent entrance solutions provider of the world.

CONTENTS

01	Advantages of Fastlink Dock Leveler	P1
02	DLS-SHK / DLS-SHI Hydraulic Dock Leveler	P2
03	DLT-THK Telescopic Dock Leveler	P6
04	DSM-ST500 Mechanical Dock Shelter	P8
05	DSS-SS250 Sponge Dock Seal	P10
06	IDS-SI950 Inflatable Dock Shelter	P11
07	Fastlink's Advantages	P12



FASTLINK INDUSTRIAL DOCK LEVELERS

SUITABLE FOR VARIOUS OCCASIONS

Dock Leveler



Fastlink dock leveler can realize the safe and fast handling process and improve the efficiency of logistics handling. The Fastlink dock levelers can effectively adjust the height difference between the carriage bottom plate of different transport vehicles and the dock leveler, and form a slope between the rear of the vehicle and the dock leveler, so that the handling process can be completed once, avoiding the possible accidental damage and unnecessary risks of vertical handling. The common dock leveler is a flap type structure. For places with high insulation and sealing requirements such as a cold-storage, the telescopic dock leveler is a better solution.

Door Seal/Door Shelter Series



Fastlink door seals/door shelters can protect the cold-storage against wind, rain and extreme weather in summer and winter, with better thermal insulation performance to provide staff with a more comfortable working environment and stable environment temperature. Door seals can be divided into mechanical door shelters, sponge dock seals and inflatable door seals.

Industrial Door Series



Fastlink has a complete product portfolio of industrial doors. Fastlink adopts German continuous production equipment, and our products have passed the European CE certification, gaining a good reputation with excellent quality, first-class technology and unique design. Our products are widely used in industrial plants, warehousing, logistics and other industries.

Technical Consultation & After-Sales Services



Fastlink can provide customers with professional advice on [handling bay planning and design]. Our professional project engineers will be engaged in site investigation and technical disclosure, and assist in design, construction, delivery and acceptance of the whole project. Fastlink has a perfect after-sales services network that can provide customers with timely and thoughtful repair and maintenance services.

FASTLINK DOCK LEVELER



Additional Optional Parts



Anti-collision Block



Wheel Wedge



Signal Light



Dock Leveler Bumper



Flexible Location Lamp



Roll-back Guide Rail

DLS-SHK / DLS-SHI DOCK HYDRAULIC DOCK LEVELER

EASY & EFFICIENT HYDRAULIC DOCK LEVELERS

Realize Horizontal Loading&unloading and Improve Efficiency Widely Used in Modern Logistics Loading Dock Leveler

Reliable Hydraulic System with a Robust Reasonable Structure

Fastlink is committed to creating a safer hydraulic dock leveler with a full range of safety configuration, including UMBRELLA protective umbrella maintenance support rods, safety hydraulic locking valves and interlocking controls.

Fastlink offers a wide range of optional configurations, including a full series of metric and British dimensions, as well as a variety of paint colors and surface treatments such as electroplating.

The Fastlink dock leveler is equipped with smoother transition devices, including an arch bridge design at the rear end and a double 5-degree clapper design at the front end.

The Fastlink dock leveler adopts the user-friendly smooth transition design in many places, which greatly reduces the incidence of occupational diseases of forklift drivers and the damage rate of goods in the handling process.

Control System

With the standard 380V three-phase AC power supply, dock leveler lifting and descending can be achieved through single-button operation, which is simple and safe.

According to customer requirements, it can achieve a coordinated control with sectional door and inflatable door seals.

Operating Instructions

When the truck is parked in place, press the control button continuously, and the clapper will open automatically when the dock leveler rises to the highest point. Loosen the control button, and the dock leveler will automatically descend until the clapper is attached to the bottom plate of the transport vehicle, after which the handling operation can be started. After handling, press the control button continuously and the dock leveler will be reset.

Structural & Quality Characteristics

Dynamic Load 6/6.8 tons

Dock Deck

Material: Q235B Non-slip Pattern Steel Plate
DLS-SHK:Base Plate Thickness: 8mm(0.3")
DLS-SHI:Base Plate Thickness: 6/8mm(0.2"/0.3")

Material

dock leveler plate: high-strength steel plates with anti-slip patterns at a thickness of 6/8mm(0.2"/0.3")
Clapper: high-strength steel plate with anti-slip patterns at a thickness of 14/15 mm(0.55"/0.6") and a standard length of 400mm(1'4")

Structure of dock leveler

Reinforced section steels of different structures with spacing no more than 200mm(7.9") are adopted, suitable for various handling equipment and different load requirements

Hydraulic Power Unit

The operation of imported hydraulic power unit, including clapper, is controlled by the hydraulic system, which ensures the reliability and low maintenance rate of the whole equipment

Surface

The coating done by electrostatic powder spraying and high temperature baking is strong in adhesion and wear resistance

Color

RAL9011 black and RAL7016 gray are standard colors, and other colors can be customized according to customer requirements

Safety Details



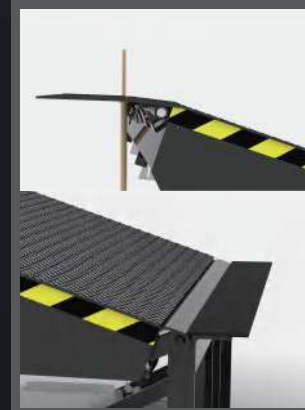
Countertop Bottom Reinforcement Ribs

The structure of the dock leveler is reinforced by 8-10 C-type section steel reinforcement bars to maintain elasticity of the dock leveler and achieve optimum support.



Inverted Oil Cylinder Design

The special inverted design of the oil cylinder can effectively prevent the oil cylinder seal ring from leakage and the safety lock valve from failing due to dust deposition.



Multiple Smooth Designs

The clapper adopts the double 5-degree arch design, which can increase the overlapping area of clapper and carriage, make the transition smoother, and avoid jolting when forklifts truck pass by. The patented arc transition design at the rear ensures that the platform is in an effective contact with the forklift tires within different height adjustment ranges, thus reducing the jolting of forklifts, occurrences of occupational diseases of the forklift drivers and the damage to the goods caused by jolting.



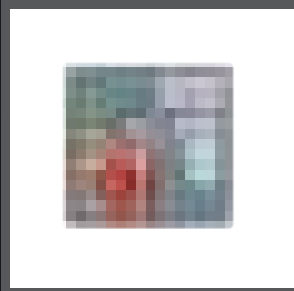
Through-Type Maintenance Support Bar

The through-type maintenance support bar can effectively support the platform and the clapper to resist the impact from the front and side. The support point is in the middle of the clapper. The penetrating design enhances safety & anti-collision performance.



Closed-Tube Hinges

The closed tubular hinge is designed to increase the contact area with the pin shaft so that it can bear the force more evenly. The tubular hinge can be lubricated with grease to ensure the flexible opening of the clapper.



Smart Control

Fastlink pioneered the Internet of Things (IoT) control box, which has received national invention patents. It enables the implementation of additional extended functions, creating value for customers by achieving intelligent management.

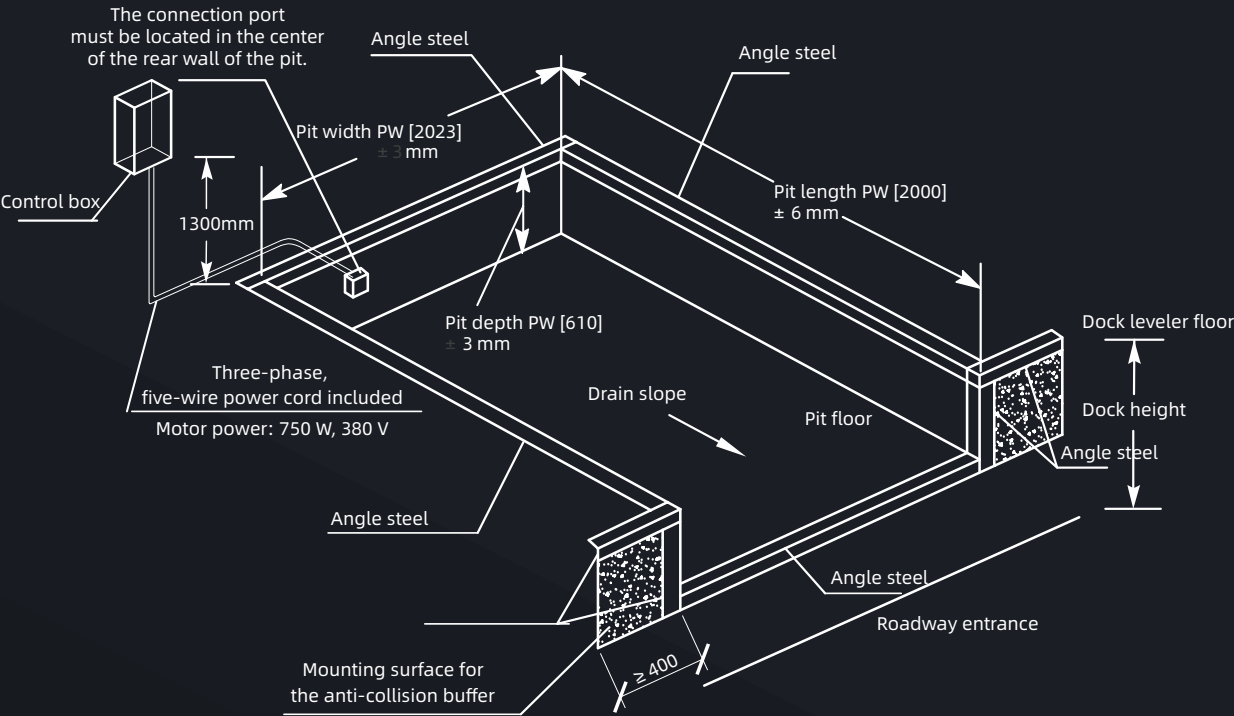
Hydraulic Dock Leveler Size

Determinants of dock leveler length:

- ① The height of the bottom plate of the freight vehicle;
- ② The design height of the dock leveler;
- ③ Types of handling equipment (forklift, tray truck, etc.).

The width of the dock leveler depends on the inside width of the freight vehicle's compartment:

Cases including unloading goods from the rear of a fully loaded vehicle, and the loading/unloading efficiency under the circumstances of vehicle chassis lower than the dock leveler should be taken into consideration.



Dock Leveler Specifications	Dock Leveler Width	Dock Leveler Length	Dock Leveler Height
W2000mm * L2000mm * H600mm (6'7"W * 6'7"L * 2'0"H)	2000mm (6'7")	2000mm (6'7")	600mm (2'0")
W2000mm * L2500mm * H600mm (6'7"W * 8'2"L * 2'0"H)	2000mm (6'7")	2500mm (8'2")	600mm (2'0")

Custom size range:

Minimum size: W1400mm * L2000mm(4'7"W * 6'7"L)
Maximum size: W2200mm * L4000mm(7'3"W * 13'1"L)
Height range: 500mm(1'8")~600mm(2'0")



FASTLINK DOCK LEVELER





DLT-THK TELESCOPIC DOCK LEVELER

USED IN SEALED & HEAT-PRESERVATION ENVIRONMENTS

Design of Loading&unloading Space for Cold-storage Breaking-cold Bridge can Reduce Energy Consumption of Cold-storage

Full-Sealing Design of Unloading Bay

Sealing performance is the key point of cold-storage unloading bay design, and it is necessary to consider the sealing effect during non-handling and handling. The combination of telescopic dock leveler, cold-storage sectional door and inflatable door seals can effectively solve this problem.

DLT-THK telescopic dock leveler is installed on the inner side of the sectional door of the cold-storage, and directly falls to the bottom of the foundation pit after the door is closed, which stops air convection between the indoor and outdoor, thus realizing the full sealing design of the unloading bay and reducing the energy loss.

For customers who have higher requirements and expect the entire cold chain, the telescopic dock leveler, which has a special foundation pit design, allows the refrigerated truck to park indoor first and open the truck door later, thus minimizing the influence on temperature inside the refrigerated truck.

Flexible Telescopic Adjustment

The telescopic Dock Leveler can be installed inside the unloading bay door of the cold-storage, and the telescopic adjustment amount up to 1,000mm(3'3") can also ensure the normal use of handling goods.

According to customer requirements, it can achieve coordinated control with sectional door and inflatable door seals. The lifting height and telescopic length of the clapper in the telescopic Dock Leveler are continuously adjustable, so that the telescopic amount of the clapper can be controlled according to the space occupied by the goods at the rear of the truck. Even if the goods are fully stacked at the rear of the truck, the handling operation can be completed with only a small overlapping width of the clapper.

Structural and Quality Characteristics

Dynamic Load 6/6.8 tons

Telescopic Clapper
The telescopic clapper with frame-reinforcing design is sturdy and durable, and the panel is made of high-strength steel plate with anti-slip patterns. It has a thickness of 14/15mm(0.55"/0.6") and a standard length of 1,000mm(3'3")/1,200mm(3'11")

Hydraulic Power Unit
The imported hydraulic power unit can realize the precise overlapping of the truck compartment by different control modules for the independent control of the dock leveler lifting and the clapper extension and retraction

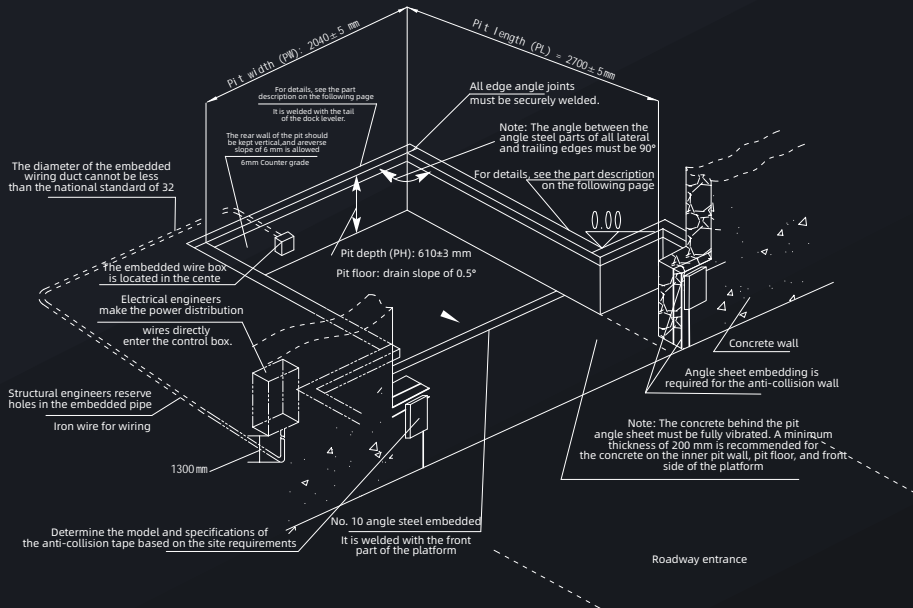
Surface
The coating done by electrostatic powder spraying and high temperature baking is strong in adhesion and wear resistance

Color
RAL9011 black and RAL7016 gray are standard colors, and other colors can be customized according to customer requirements

Operating Instructions

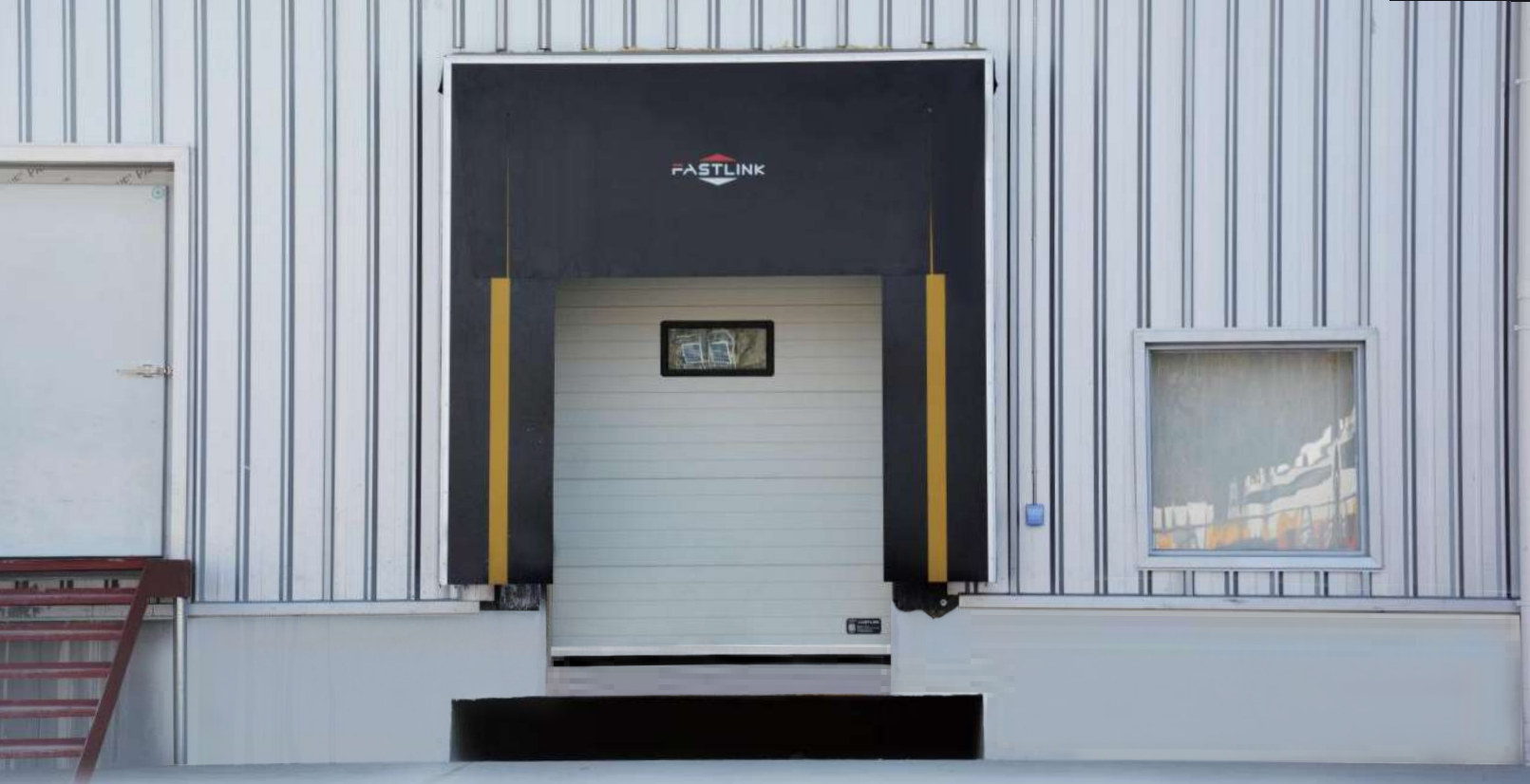
When the truck is parked in place, raise the operation dock leveler to the highest point through the button control, and then press the button to extend the clapper. When the clapper extends to the required length or fully extends, release the button, and the dock leveler will automatically descend until the clapper overlaps with the bottom plate of the truck, and loading/unloading process can be started. After finishing the loading/unloading process, repeat the above operation to reset the dock leveler.

Telescopic Dock Leveler Size



dock leveler Specifications	dock leveler Width	dock leveler Length	dock leveler Height
W2000mm * L2000mm * H600mm (6'7"W * 6'7"L * 2'0"H)	2000mm (6'7")	2000mm (6'7")	600mm (2'0")
W2000mm * L2500mm * H690mm (6'7"W * 8'2"L * 2'3"H)	2000mm (6'7")	2500mm (8'2")	690mm (2'3")

Custom size range:
Minimum size: W1800mm * L2000mm(5'11"W * 6'7"L)
Maximum size: W2200mm * L2500mm(7'3"W * 8'2"L)
Height range: 600mm(2'0")~690mm(2'3")



DSM-ST500 MECHANICAL DOCK SHELTER

FOR THE SEALED ENVIRONMENTS WITH
A WIDER RANGER OF TRUCK TYPES

SOLID AND FLEXIBLE CURTAIN
CAN BE SUITABLE FOR DIFFERENT TRUCK TYPES

Saving Energy

It has a good sealing effect on the space between the vehicle and the warehouse. It is windproof, rainproof, dustproof, and blocks the air flow, and also improves the working environment and helps energy saving and operation in the warehouse.

Frame Structure

The door shelter is composed of front frame, rear frame and connecting arm. The whole frame is treated with hot galvanization for corrosion resistance, and the surface is fixed and decorated with aluminum alloy profile which is anodized for an elegant appearance.

Curtain Quality

The curtain is made of neoprene fiber or polyethylene fiber cloth and coated with PVC.

Bottom Door Mat

The bottom door mat ensures that the door shelter and door curtain are vertical while ensuring better sealing performance.

Steel Protection Device

In order to protect the handled goods and the door shelter from collision from the handling process, as well as reduce maintenance, the steel protection device is added.

Telescopic Frame Design

The frame is hinged to allow backlog and provides the necessary flexibility when approaching the vehicle.

Top Drainage System

The top of the door shelter frame is inclined to facilitate top drainage.

Sturdy Frame Structure

Effectively prevent side frames from spreading out under high pressure.

Multiple Specifications & Dimensions

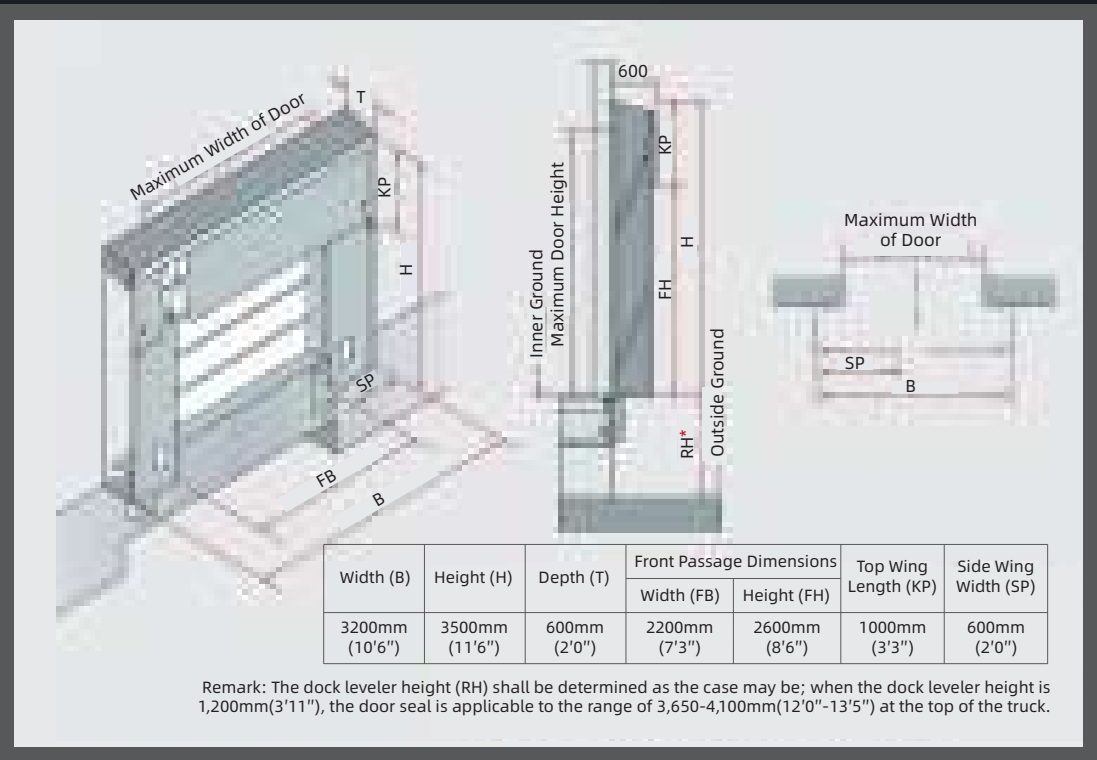
Dock Sela Size	Width	Length	Height
W3200mm * H3500mm * T600mm (10'6"W * 11'6"H * 2'0"T)	3200mm (10'6")	3500mm (11'6")	600mm (2'0")

Custom size range:

Minimum size: W2800mm * H2600mm(9'2"W * 8'6"H)

Maximum size: W4000mm * H5000mm(13'1"W * 16'5"H)

Mechanical Door Shelter Dimensions





DSS-SS250 SPONGE DOCK SEAL

**BEST CHOICE FOR TRUCKS
WITH UNIFORM SIZE**

**FOR LOADING&UNLOADING ENVIRONMENTS
OF HIGH ENERGY CONSUMPTION**

IDS-SI950 INFLATABLE DOCK SHELTER

Strictly Sealed Environment

High performance sponge with maximum compression density up to 70%.

Enhanced High-Quality Performance

The fabric fixed with screws and metal buttonholes always ensures an even air spillage.

Better Security Assurance

Effectively reduces energy consumption while ensuring personal and property safety.

Less Pressure and Friction

Unique pressure relief design can effectively reduce the friction between the door seal and the truck, and prolong the service life of the door seal.

Wearproof Shutter

Distributed on both sides and above to provide additional wear protection and effectively extend the service life of the door seal.

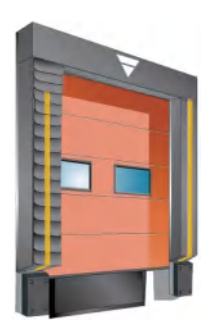
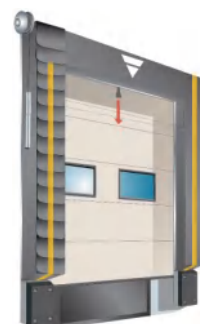
Plated Steel Plate Gasket

Eliminates the potential problems of distortion, perishability and susceptibility to corrosion that wooden liners may encounter in the past.

Guide Bar

Yellow guide bars with reflective properties provide better safety.

Different top designs are available for different truck heights, such as: fixed, adjustable, hanging curtain, etc.



Custom size range:

Minimum size: W1800mm * H2000mm(5'11"W * 6'7"H)
Maximum size: W4000mm * H5000mm(11'1"W * 13'5"H)

Easy Operation

After the vehicle stops, the electric switch is turned on, and the inflatable door seals blower starts to inflate to seal the gap between the three sides of the carriage and the opening completely. The surface material of the door seal is soft and will not damage the surface of the vehicle. The blower needs to continue working during operation to ensure the pressure for airbag, so that a certain wind resistant performance is there.

After completing the operation process, the blower switch is turned off, the airbag is automatically deflated through the vent holes, and the airbag is automatically retracted by the built-in balance weight.

Wide Range of Application

The width adjustment range is up to 1,000mm(3'3") and the height adjustment range is up to 1,000mm(3'3"), which is suitable for the height of various truck chassis.

Low Maintenance Requirements

The surface material of the inflatable door seals is high-quality neoprene rubber with high wear resistance and flexibility. The black color material leads to a service life of no less than 30,000 times.

Effective Operation

It adopts a large air volume fan with a voltage of 220V and is installed outdoors to meet the needs of application during extreme weather (-30°C~+60°C).

Signal Light

The clearly visible signal light system directs the truck and forklift drivers to operate in an orderly and safe manner.

Custom size range:

Minimum size: W2800mm * H3000mm(9'2"W * 9'10"H)
Maximum size: W4000mm * H4500mm(13'1"W * 14'9"H)



FASTLINK'S
ADVANTAGES



WE PROMISE TO
PROVIDE MORE DURABLE SECURITY

✔ **Fastlink After-sales Advantage**

- Security Provision** Professional team, original accessories, liability tracing system
- Quick Response** Far above the industry level
- Scientific Data Management System** Any maintenance data is traceable, and we strives to continuously optimize our service capabilities
- More Economical Maintenance Package** Cover all consumable replacement and maintenance items

✔ **Providing Third-party Additional Protection**

- Product Accident Insurance**
At the customer's site, any property loss or personal injury caused by Fastlink products shall be settled by the third party insurance.
- Personal Accident Insurance**
Any personal injury accident caused by the employees of Fastlink shall be settled by the third party insurance during the on-site work of the customers.

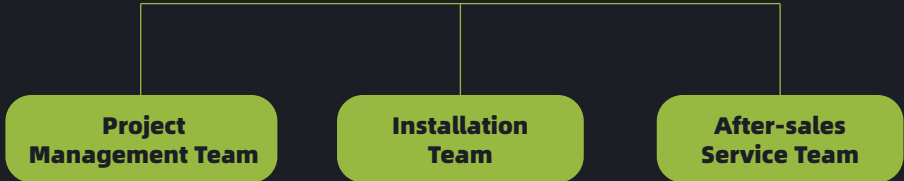
✔ **Providing Maintenance Packages Of Different Specifications After The Warranty Period**

SERVICE

Compared with the layout of the sales network, Fastlink attaches more importance to the fulfillment and delivery of orders and the after-sales guarantee of products.

Since the establishment of the company, we have passed on the after-sales service gene, and the three service teams have been constantly expanding the localization to achieve the service guarantee of rapid response.

Fastlink has nationwide distribution of



- Shanghai
- Kunshan
- Suzhou
- Changzhou
- Zhejiang
- Hefei
- Fujian
- Guangzhou
- Wuhan
- Shenyang
- Tianjin
- Shandong
- Beijing
- Hebei
- Zhengzhou
- Xi'an
- Chongqing
- Chengdu
- Guiyang
- Huhehaote

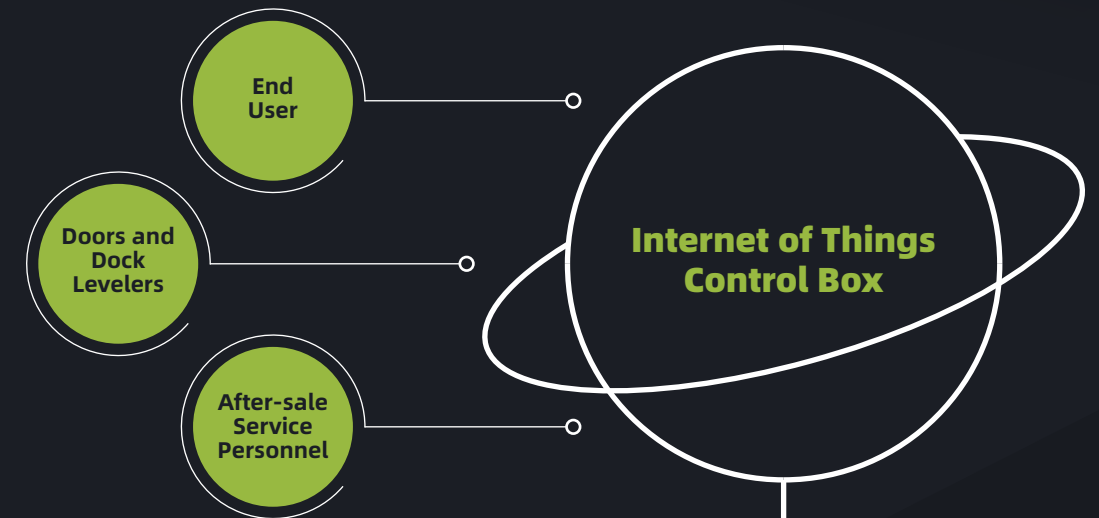


INFORMATION MANAGEMENT

Fastlink takes the lead in investing resources to establish an intelligent service management dock leveler, and continuously launches service functions such as efficient inquiry of orders for customers and one-click report for repair and customer evaluation on the mobile phone, so as to realize end-to-end service that starts with customer demand and ends with customer satisfaction.

TECHNICAL SERVICE

Fastlink initiates the world's first Internet of Things Control Box (national invention patent), realizing system interconnection and turning passive service into active service.



1 Customer Service Terminal QR Code Repair Report

Customers can scan the QR code with the mobile phone to quickly report for repair, inquire the contact information of the assigned after-sales engineer, and check the whole service process in real time.

Fastlink distributes task orders on APP to the nearest after-sales service engineers, realizing data management from the assigning to the completion of the repair. Customers can evaluate the service on the mobile phone, which always reflects the business philosophy of customer first.

2 Cloud Platform

The cloud Platform can display the usage status of warehouse products in real time (running times, fault information, real-time uploading).

Authorized customers can check the usage of all projects in the country from the system, and accurate data analysis for equipment repair and maintenance are provided to customers.

The system can connect with the customer park management system and realize the management goal of an intelligent park.

